

Behavioral Health in Crisis

Maryland's Hospitals Are the Safety Net



1 in 5 Marylanders suffer from mental health and substance use disorders

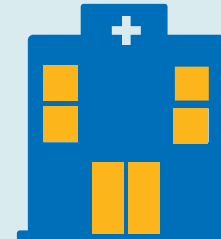


Behavioral health-related emergency department (ED) visits continue to rise even as all other visits fall



Length of stay for behavioral health patients increased by **3%** from 2017 to 2018

Behavioral health inpatients stayed on average **13 days more** than needed due to barriers getting to suitable care sites



1/3 of patients arrive in the ED by law enforcement

42% of behavioral health patients in an ED **were delayed reaching the next level of care;** many needed no hospital care at all

Source: MHA research on general hospital experience with behavioral health patients, 2018-19

How you can help:

Support legislation **to expand the definition of emergency facilities** where police can take emergency petition patients for evaluation.